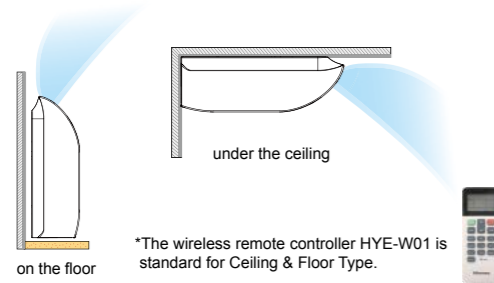


Ceiling & Floor Type



Flexible Installation

The unit can be installed either standing on the floor or hanging under the ceiling.

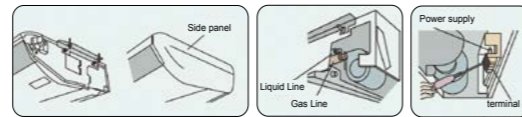


*The wireless remote controller HYE-W01 is standard for Ceiling & Floor Type.



Convenient Installation and Maintenance

Advanced structure design that makes the unit installation, pipe connection, even wiring work into simple.



1. Unit installation work can be done directly just open the side panel
2. After open side panel, big space for pipe connection provide convenience for pipe installation
3. Set DIP switch by opening electric box cover, simple and convenience.



Wider 3D-air Flow Range

Broad air deflector design realized broad air supply range. The wind direction can be adjusted according to the need thus makes the customers feel more comfortable.



New Fashion Design Appearance and High Quality

The fashionable design and streamline appearance gives a perfect choice for users. The integrative side panel makes the whole unit more concordant. Big air outlet with an integrative large louver realizes high air volume and low noise.

Wall Mounted Type



The Design of Elegant Smooth Panel with Hidden LED Display

The quality of "Elegance" is to meet contemporary needs. The simple and smooth form harmonizes with any interior style. The smooth panel can be cleaned easily.



*The wireless remote controller HYE-W01 is standard for Wall Mounted Type.



Compact and Light Weight, Allowing Easy Installation

For easy installation, a slim design is adopted to this new model by using a high proportion of lightweight resin parts, which greatly reduced the weight of the unit.



The Sleep Mode Offers Comfortable Temperature for People to Enjoy Good Sleep

The sleep mode can be kept for 8 hours. The setting temperature can be adjusted automatically for your comfort.



Quiet Operation for Super Low Sound Level

The one-touch quiet operation can set the system work in a super low speed and make the noise level low to 28 dB(A).



Anti-mold Filter

Anti-mold filter is equipped as standard accessory.



Free Installation

The water drain pipe can be set either on the left side or on the right side of the unit. The connection pipe can be set in left, right or back side of the unit.

Indoor unit		Ceiling & Floor Type							
Model Power Supply	AC1Φ220V~240V/50Hz/60Hz	AVV-17URSCA	AVV-18URSCA	AVV-22URSCA	AVV-24URSCA	AVV-27URSCB	AVV-30URSCB	AVV-38URSCB	AVV-48URSCC
		AVV-17UR2SA	AVV-18UR2SA	AVV-22UR2SA	AVV-24UR2SA	AVV-27UR2SB	AVV-30UR2SB	AVV-38UR2SB	AVV-48UR2SC
Nominal Cooling Capacity	kW	5	5.6	6.3	7.1	8.4	9	11.2	14.2
	kcal/h	4,300	4,800	5,400	6,100	7,200	7,700	9,600	12,200
	Btu/h	17,100	19,100	21,500	24,200	28,700	30,700	38,200	48,500
Nominal Heating Capacity	kW	5.6	6.5	7.5	8.5	9.6	10	13	16.3
	kcal/h	4,800	5,600	6,500	7,300	8,300	8,600	11,200	14,000
	Btu/h	19,100	22,200	25,600	29,000	32,800	34,100	44,400	55,600
Motor Power	W	40	40	70	70	70	80	130	160
Air Flow Rate (H/M/L)	m ³ /h	780/660/540	780/660/540	966/840/678	966/840/678	1,092/912/732	1,164/978/798	1,488/1,230/978	1,980/1,680/1,380
Noise Level (Ceiling)	dB(A)	39/35/30	39/35/30	45/41/37	45/41/37	43/39/34	45/40/36	51/46/40	50/46/42
Noise Level (Floor)	dB(A)	43/38/35	43/38/35	48/44/40	48/44/40	46/41/37	48/43/39	54/49/43	55/50/46
Outer Dimensions	H	mm	230	230	230	230	230	230	230
	W	mm	990	990	990	990	1,285	1,285	1,580
	D	mm	680	680	680	680	680	680	680
Net Weight	kg	31	31	32	32	39	40	41	47
Piping Connections		Flare-nut Connection(with Flare Nuts)							
Liquid Line	mm	Φ6.35	Φ6.35	Φ9.53	Φ9.53	Φ9.53	Φ9.53	Φ9.53	Φ9.53
Gas Line	mm	Φ15.88	Φ15.88	Φ15.88	Φ15.88	Φ15.88	Φ15.88	Φ15.88	Φ15.88
Condensate Drain		VP25(Outer Diameter Φ32)							
Speed-up Setting HH1	m ³ /h	852	852	1,068	1,068	1,188	1,272	1,620	2,160
Speed-up Setting HH2	m ³ /h	960	960	1,200	1,200	1,338	1,410	1,752	2,244

NOTES:

1. The nominal cooling capacity and heating capacity are based on following conditions:
Cooling Operation Conditions
Indoor Air Inlet Temperature: 27°C DB (80°F DB) 19°C WB (66.2°F WB)
Outdoor Air Inlet Temperature: 35°C DB (95°F DB)
Piping Length: 5.0 Meter Piping Lift: 0 Meter
Heating Operation Conditions
Indoor Air Inlet Temperature: 20°C DB (68°F DB)
Outdoor Air Inlet Temperature: 7°C DB (45°F DB) 6°C WB (43°F WB)

2. The sound pressure level is based on following conditions:
1.0m beneath the unit, 1.0m from Discharge Grille.
The above data was measured in an anechoic chamber so that reflected sound should be taken into consideration in the field. When bottom air inlet is adopted, sound pressure will increase according to factors such as installation mode and the room structure.

Indoor unit		Wall Mounted Type							
Model Power Supply	AC1Φ220V~240V/50Hz/60Hz	AVS-07URCSABA	AVS-09URCSABA	AVS-12URCSABA	AVS-14URCSABA	AVS-17URCSABA	AVS-18URCSBBA	AVS-22URCSBBA	AVS-24URCSBBA
		AVS-07UR2SABA	AVS-09UR2SABA	AVS-12UR2SABA	AVS-14UR2SABA	AVS-17UR2SABA	AVS-18UR2SBBA	AVS-22UR2SBBA	AVS-24UR2SBBA
Nominal Cooling Capacity	kW	2.2	2.8	3.6	4.0	5.0	5.6	6.3	7.1
	kcal/h	1,900	2,400	3,100	3,450	4,300	4,816	5,418	6,106
	Btu/h	7,500	9,500	12,300	13,600	17,000	19,100	21,500	24,200
Nominal Heating Capacity	kW	2.5	3.3	4.0	4.5	5.6	6.3	7.1	8
	kcal/h	2,150	2,800	3,450	3,900	4,800	5,418	6,106	6,880
	Btu/h	8,500	11,100	13,600	15,300	19,100	21,500	24,200	27,300
Air Flow Rate (High/Medium/Low/Mute)	m ³ /h	660/590/520/460	660/590/520/460	830/660/520/460	830/660/520/460	900/750/590/460	893/782/671/582	1,006/893/716/621	1,122/984/804/649
Noise Level (High/Medium/Low/Mute)	dB(A)	39/34/32/28	39/34/32/28	43/39/32/28	43/39/32/28	45/40/34/29	41/37/34/30	44/41/36/31	46/43/38/33
Net Weight	kg	13.5	13.5	13.5	13.5	13.5	16.0	16.0	16.0
Motor Power	W	50	50	60	60	65	62	72	82
Connections Refrigerant Piping		Flare-nut Connection(with Flare Nuts)							
Liquid Line	mm	Φ6.35	Φ6.35	Φ6.35	Φ6.35	Φ6.35	Φ9.53	Φ9.53	Φ9.53
Gas Line	mm	Φ12.7	Φ12.7	Φ12.7	Φ12.7	Φ12.7	Φ15.88	Φ15.88	Φ15.88
Condensate Drain		VP16(Outer Diameter Φ32)							
Outer Dimensions	H	mm	315	315	315	315	315	315	315
	W	mm	960	960	960	960	960	1,120	1,120
	D	mm	230	230	230	230	230	230	230
Packing Volume	m ³	0.17	0.17	0.17	0.17	0.17	0.19	0.19	0.19
Wireless Remote Controller/Receiver		HYE-L01+Receiver							
Wire Remote Controller		Option	Option	Option	Option	Option	Option	Option	Option
Fan motor		PG Fan motor	PG Fan motor	PG Fan motor	PG Fan motor	PG Fan motor	PG Fan motor	PG Fan motor	PG Fan motor
Drain Pump		NO	NO	NO	NO	NO	NO	NO	NO

NOTES:

1. The nominal cooling capacity and heating capacity are based on following conditions:
Cooling Operation Conditions
Indoor Air Inlet Temperature: 27°C DB(80°F DB), 19.0°C WB(66.2°F WB)
Outdoor Air Inlet Temperature: 35°C DB(95°F DB)
Piping Length: 7.5 Meters Piping Lift: 0 Meter
Heating Operation Conditions
Indoor Air Inlet Temperature: 20°C DB(68°F DB)
Outdoor Air Inlet Temperature: 7°C DB(45°F DB), 6°C WB(43°F WB)

2. The sound pressure level is based on following conditions:
1.0m beneath the unit and 1.0m from inlet grille.
Voltage of the power source for the indoor fan motor is 220V.
In case of the power source of 240V, the sound pressure level increases by about 1~2dB.
The above data was measured in an anechoic chamber so that reflected sound should be taken into consideration in the field.