

## Hi-Smart H Series

- DC inverter-driven compressor
- Low noise technologies
- Compact and lightweight design
- Unique electrical system insect-resistant design
- Optimized air duct system design



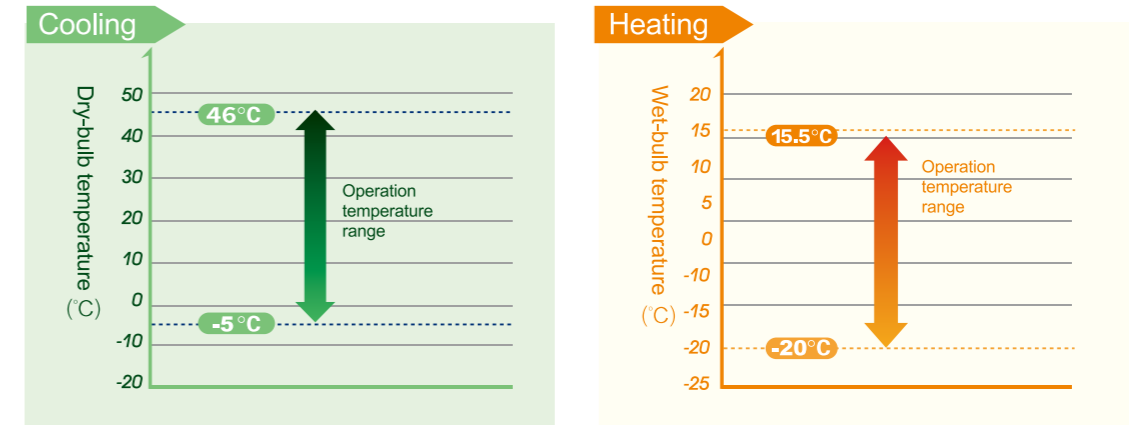
### Aviation Level Design of Grilling

Hi-Smart H Series creates a high-quality quiet environment. The design of the grilling follows the design concept of the aircraft engine design, which conforms to the aerodynamics principle. The noise has been greatly reduced. The grilling also increases safety as being a preventative for child figure being injured by the fan blade.



### Wide Operation Range

The highest operation temperature reaches to 46°C\* in cooling mode, and lowest operation temperature reaches to -20°C\* in heating mode.



Note: The double fan achieves the lowest operation temperature that can reach to -20°C in heating mode.

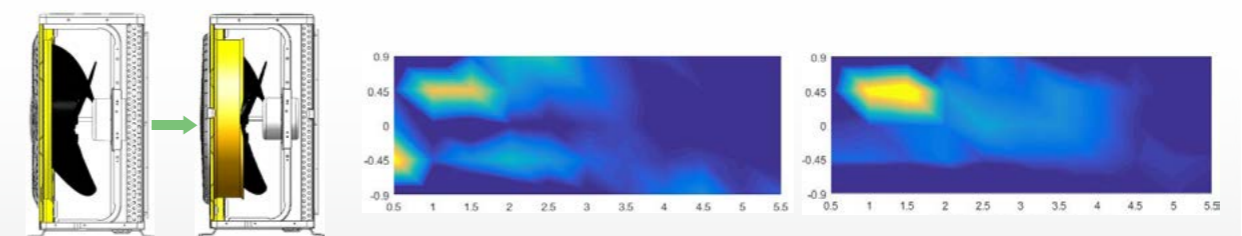
### Electrical System Insect-resistant Design

Electrical system adds insect-resistant design that effectively prevents insect from damaging the electrical system and improves the electrical system.

### Optimized Air Duct System Design

Optimized air duct system design improves air supply distance and avoids short circuit of return air and improves heat exchange ability.

Similarly, the wind speed of 0.8m/s is taken as the critical judgment point. According to the measured results, the air supply distance of the grille before changing is 3.7m. The modified air supply distance is 4.6m and the air supply distance is increased by about 24%.

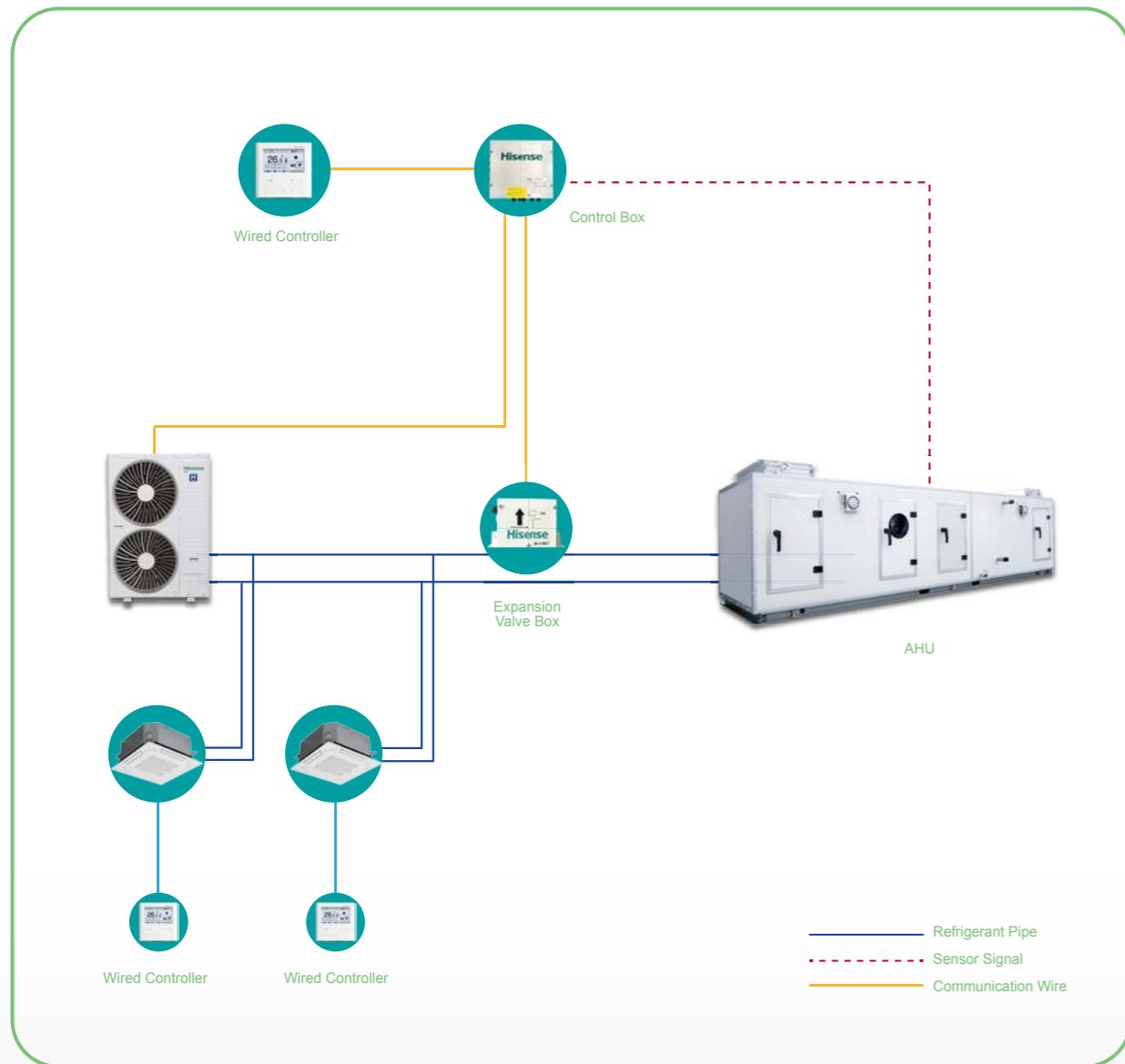


### AHU-CONNECTION KIT

The Air-handling units connect to the Hisense VRF system through the AHU-KIT, which can provide more flexible air conditioning solutions and save more cost.

#### Main Function

- ON/OFF Control
- Capacity Demand
- Temperature Setting
- Operation Mode



### Outdoor Unit Specifications

Model(HP)			3	4	5	5
Model			AVW-28HJFH	AVW-34HJFH	AVW-43HJFH	AVW-43HKFH
Power Supply		-	AC 220~240V 1Φ 50/60Hz			AC 380~415V 3Φ 50/60Hz
Cooling Operation	Nominal Capacity	kBtu/h	27.3	34.1	42.7	42.7
		kW	8.0	10.0	12.5	12.5
	Power Consumption	kW	1.93	2.34	2.98	3.81
	EER		4.15	4.27	4.19	3.28
Heating Operation	Nominal Capacity	kBtu/h	32.4	38.2	47.8	47.8
		kW	9.5	11.2	14.0	14.0
	Power Consumption	kW	2.37	3.01	4.15	3.68
	COP		4.01	3.72	3.37	3.80
Air Flow Rate		m <sup>3</sup> /min	46.5	69.0	78.0	75.0
Out Dimension(H×W×D)		mm	800×950×370	800×950×370	800×950×370	800×950×370
Packing Dimension(H×W×D)		mm	930×1025×460	930×1025×460	930×1025×460	930×1025×460
Net Weight		kg	65	73	78	84
Gross Weight		kg	72	81	86	96
Refrigerant Piping	Liquid Line	mm(in.)	Φ9.53(3/8)	Φ9.53(3/8)	Φ9.53(3/8)	Φ9.53(3/8)
	Gas Line	mm(in.)	Φ15.88(5/8)	Φ15.88(5/8)	Φ15.88(5/8)	Φ15.88(5/8)
Max. number of connectable IDU			5	6	8	8
Sound Pressure Level (Cooling/Heating)		dB(A)	50/52	53/55	54/57	55/57
Operation Range	Cooling	°C DB	-5~46			
	Heating	°C WB	-15~15.5		-15~15.5	
Branch pipe			HFQ-052F			
Compressor Type			Rotary		Scroll	

#### Notes:

\*1. Rated cooling capacity and rated heating capacity are tested in the following conditions:  
 Cooling conditions: indoor air inlet temperature: 27°C DB 19°C WB, Outdoor air inlet temperature: 35°C DB, pipe length : 7.5m, pipe height difference: 0m  
 Heating conditions: indoor air inlet temperature: 20°C DB, Outdoor air inlet temperature: 7°C DB 6°C WB, pipe length : 7.5m, pipe height difference : 0m

\*2. The sound pressure level is based on following conditions:  
 1.5m beneath the unit.

The above data was measured in an anechoic chamber so that reflected sound should be taken into consideration in the field.

## Outdoor Unit Specifications



Model(HP)		4	5	6	5	6	
Model		AVW-38HJFH	AVW-48HJFH	AVW-54HJFH	AVW-48HKFH	AVW-54HKFH	
Power Supply	-	AC 220~240V 1Φ 50/60Hz			AC 380~415V 3Φ 50/60Hz		
Cooling Operation	Nominal Capacity	kBtu/h	38.2	47.8	52.9	47.8	52.9
		kW	11.2	14.0	15.5	14.0	15.5
	Power Consumption	kW	2.60	3.46	4.21	3.92	4.44
	EER		4.31	4.05	3.68	3.57	3.49
Heating Operation	Nominal Capacity	kBtu/h	42.7	54.6	61.4	54.6	61.4
		kW	12.5	16.0	18.0	16.0	18.0
	Power Consumption	kW	2.78	3.71	4.47	4.03	4.74
	COP		4.50	4.31	4.03	3.97	3.80
Air Flow Rate	m³/min	90.0	90.0	100.0	90.0	100.0	
Out Dimension(H×W×D)	mm	1380×950×370	1380×950×370	1380×950×370	1380×950×370	1380×950×370	
Packing Dimension(H×W×D)	mm	1520×1025×460	1520×1025×460	1520×1025×460	1520×1025×460	1520×1025×460	
Net Weight	kg	93	95	97	103	103	
Gross Weight	kg	111	111	111	118	118	
Refrigerant Piping	Liquid Line	mm(in.)	Φ9.53(3/8)	Φ9.53(3/8)	Φ9.53(3/8)	Φ9.53(3/8)	Φ9.53(3/8)
	Gas Line	mm(in.)	Φ15.88(5/8)	Φ15.88(5/8)	Φ15.88(5/8)	Φ15.88(5/8)	Φ15.88(5/8)
Max. number of connectable IDU		9	11	11	11	11	
Sound Pressure Level (Cooling/Heating)	dB(A)	50/52	52/54	53/55	48/50	50/52	
Operation Range	Cooling	°C DB	-5~46				
	Heating	°C WB	-20~15.5				
Branch pipe		HFQ-052F					
Compressor Type		Rotary			Scroll		

**Notes:**

\*1. Rated cooling capacity and rated heating capacity are tested in the following conditions:  
Cooling conditions: indoor air inlet temperature: 27°C DB 19°C WB, Outdoor air inlet temperature: 35°C DB, pipe length : 7.5m, pipe height difference: 0m  
Heating conditions: indoor air inlet temperature: 20°C DB, Outdoor air inlet temperature: 7°C DB 6°C WB, pipe length: 7.5m, pipe height difference : 0m

\*2. The sound pressure level is based on following conditions:  
1.5m beneath the unit.  
The above data was measured in an anechoic chamber so that reflected sound should be taken into consideration in the field.



Model(HP)		8	10	12	8	10	12	
Model		AVW-76HKFH	AVW-96HKFH	AVW-114HKFH	AVW-76H9FH	AVW-96H9FH	AVW-114H9FH	
Power Supply	-	AC 380~415V 3Φ 50/60Hz			AC 220V 3Φ 60Hz			
Cooling Operation	Nominal Capacity	kBtu/h	76.5	95.6	114.3	76.5	95.6	114.3
		kW	22.4	28.0	33.5	22.4	28.0	33.5
	Power Consumption	kW	6.36	7.80	10.60	6.30	8.30	10.70
	EER		3.52	3.59	3.16	3.56	3.37	3.13
Heating Operation	Nominal Capacity	kBtu/h	85.3	107.5	128	85.3	107.5	128
		kW	25.0	31.5	37.5	25.0	31.5	37.5
	Power Consumption	kW	5.81	7.00	10.11	5.9	7.8	9.9
	COP		4.30	4.50	3.71	4.24	4.04	3.79
Air Flow Rate	m³/min	150.0	163.0	163.0	121	150	163	
Out Dimension(H×W×D)	mm	1650×1100×390	1650×1100×390	1650×1100×390	1650×1100×390	1650×1100×390	1650×1100×390	
Packing Dimension(H×W×D)	mm	1748×1151×500	1748×1151×500	1748×1151×500	1748×1151×500	1748×1151×500	1748×1151×500	
Net Weight	kg	160	170	170	168	168	171	
Gross Weight	kg	179	194	194	179	179	182	
Refrigerant Piping	Liquid Line	mm(in.)	Φ12.7(1/2)	Φ12.7(1/2)	Φ12.7(1/2)	Φ9.53(3/8)	Φ12.7(1/2)	Φ12.7(1/2)
	Gas Line	mm(in.)	Φ22.2(7/8)	Φ25.4(1/1)	Φ25.4(1/1)	Φ19.05(3/4)	Φ22.2(7/8)	Φ25.4(1/1)
Max. number of connectable IDU		15	17	19	10	10	10	
Sound Pressure Level (Cooling/Heating)	dB(A)	58/60	59/61	59/61	53/55	56/58	56/61	
Operation Range	Cooling	°C DB	-5~46					
	Heating	°C WB	-20~15.5					
Branch pipe		HFQ-162F						
Compressor Type		Scroll						

**Notes:**

\*1. Rated cooling capacity and rated heating capacity are tested in the following conditions:  
Cooling conditions: indoor air inlet temperature: 27°C DB 19°C WB, Outdoor air inlet temperature: 35°C DB, pipe length : 7.5m, pipe height difference: 0m  
Heating conditions: indoor air inlet temperature: 20°C DB, Outdoor air inlet temperature: 7°C DB 6°C WB, pipe length: 7.5m, pipe height difference : 0m

\*2. The sound pressure level is based on following conditions:  
1.5m beneath the unit.  
The above data was measured in an anechoic chamber so that reflected sound should be taken into consideration in the field.